



Your Partner of Supply

Manufacturer:
Company: CIS Medical Technology (Nanjing) Co., Ltd
Manufacturing address: 5th Floor, Building 3, Jinjulong Building, No. 9 Gaohu Road,
Jiangning Development Zone, Nanjing City. 211100
Tel:+86 15895906933 E-mail: cissale@126.com

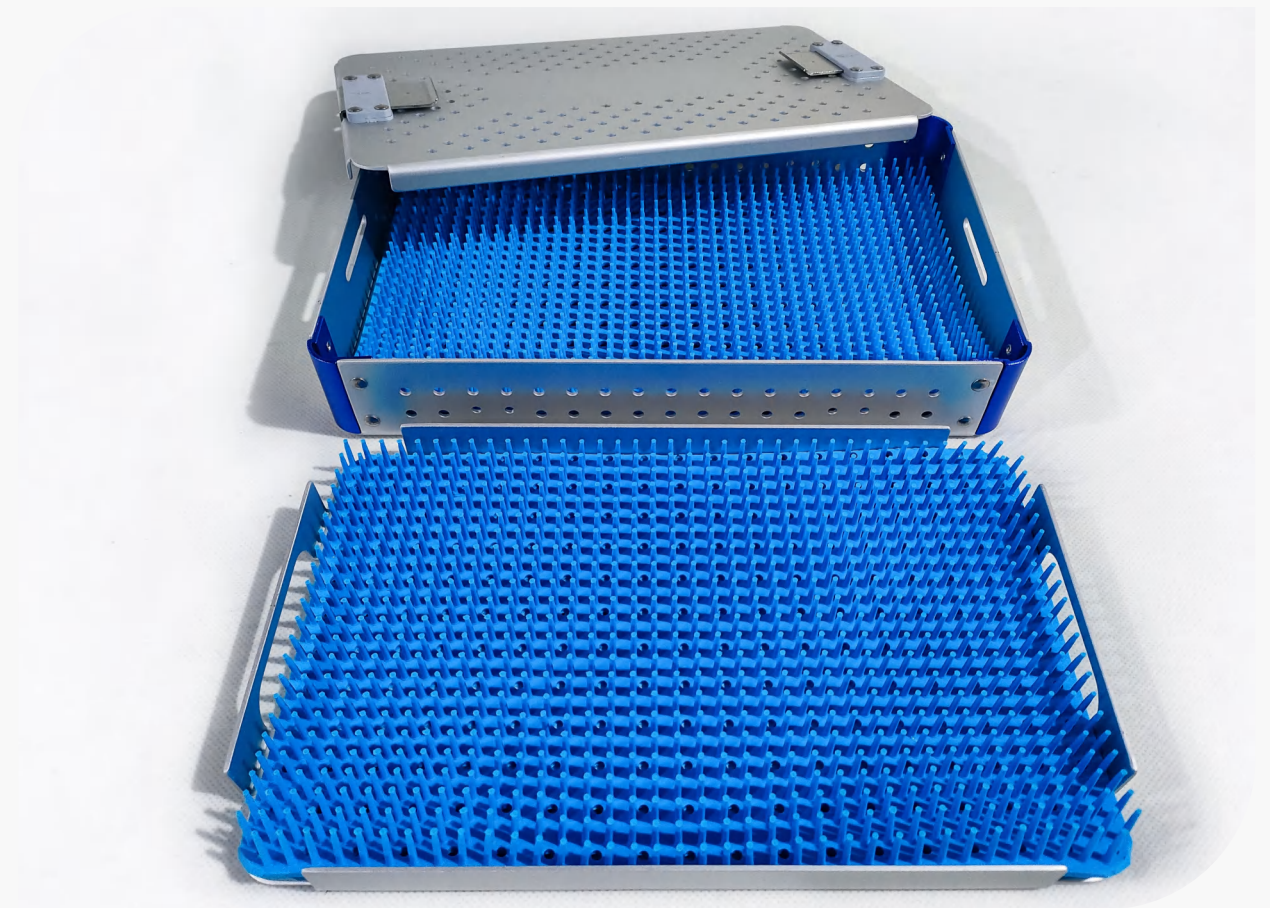
Sellers:
Company: YPS(Nanjing) Medical Hitech Co., Ltd. Web: www.ypsmed.com
Address: Building 1, Jinjulong Building 9#, Gaohu Road Nanjing City, China, 211100
Tel:+86 17326124858 E-mail: sale3@cismedic.com

ISO13485: 2016



Comprehensive Innovative Service

CIS Medical Technology (Nanjing) Co., Ltd



Catalog of Sterilization Box

The Dedicated Manufacturer of Medical Instrument Cases



OVERVIEW

Product Features

Processing

The integrated CNC processing equipment, with high precision, and good part fitting;

Lock

Stainless steel, full-rounded design, up to 50KG pull strength sustainable with special stainless steel;

Accessories:

Medical grade silicone pad and bracket

Material:

Aluminium Alloy,
Stainless Steel 304;
Silicone Resin;
PPSU Resin

Surface:

Anodic oxidation treatment, with black, grey, silver and other available colors, many othe colors available for aluminium box, with gloss surface;

Assemble

Riveted with customized stainless steel rivets, sturdy and nice;

Aluminum Alloy Box

1-1 Laparoscopic Instrument Box



LHJ-542507
540*250*70 mm



LHJ-533015-2 (2 layers)
535*300*155 mm



LHJ-542510-2 (2 layers)
540*250*100 mm

LHJ-542510
540*250*100 mm

1-2 Endoscope Box

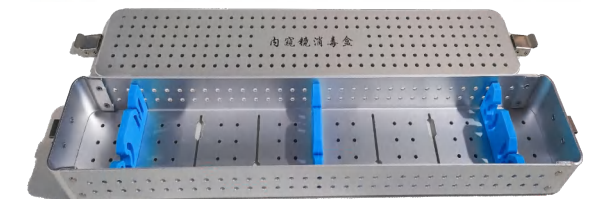
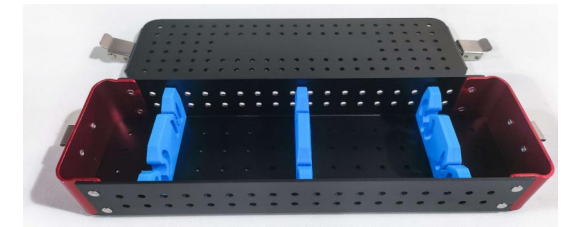


LHJ-450804; 450*84*42 mm

LHJ-270804; 270*84*42 mm

LHJ-580804; 580*84*42 mm

LHJ-640804; 650*84*42 mm



Aluminum Alloy Box

1-3 Electric Cutting Mirror Instrument Box



LHJ-422809
420*280*90 mm

1-4 Percutaneous Nephroscope Box



LHJ-452007
450*200*70 mm

1-5 Cystoscope Instrument Box



LHJ-532309-2 (2 layers)
530*230*90 mm

Aluminum Alloy Box

1-6 Electric Uterine Cutting Instrument Box



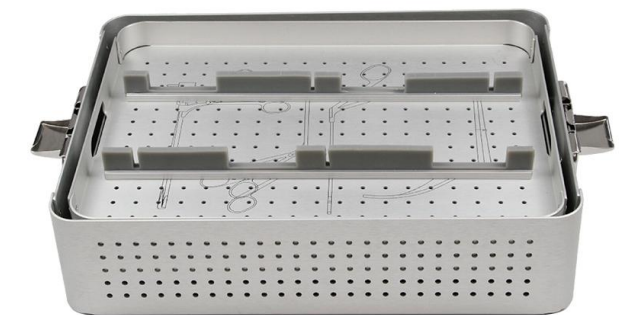
LHJ-552513-3 (3 layers)
550*250*135 mm

1-7 Laryngoscope Instrument Box



LHJ-432109-2 (2 layers)
430*210*90 mm

1-8 Sinuscope Instrument Box



LHJ-362609-3 (3 layers)
360*260*90 mm

Aluminum Alloy Box

1-9 Universal Box



LHJ-302005
300*200*50 mm



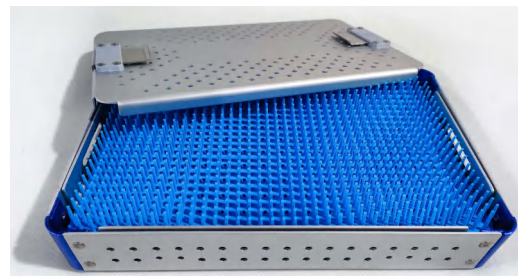
LHJ-302009-2 (2 layers)
300*200*90 mm

LHJ-302007
300*200*70 mm

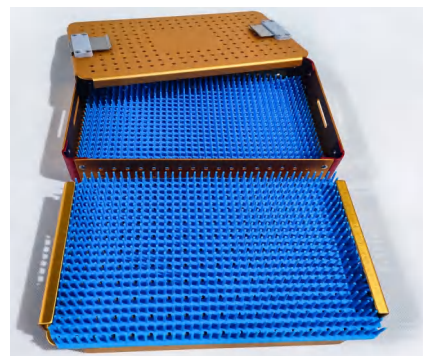
1-10 Microscope Box With Silicone Pad



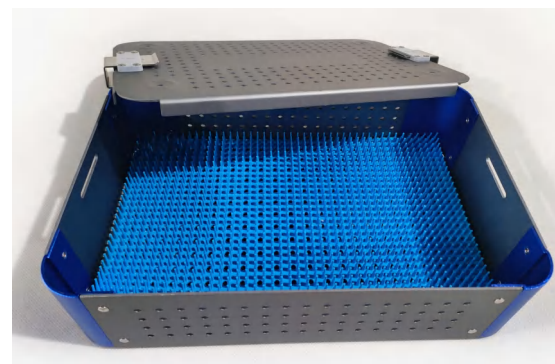
LHJ-261603
260*160*35 mm



LHJ-251602
250*160*25 mm



LHJ-261604-2 (2 layers)
260*160*42 mm

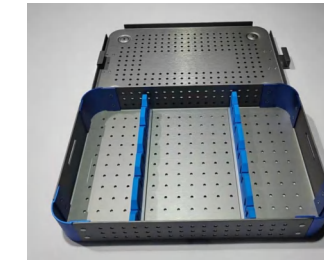


Aluminum Alloy Box

1-11 Microscope Box With Silicone Bracket



LHJ-252505
250*250*50 mm



LHJ-252507
250*250*70 mm



LHJ-252510-2 (2 layers)
250*250*100 mm

LHJ-271206
270*120*60 mm

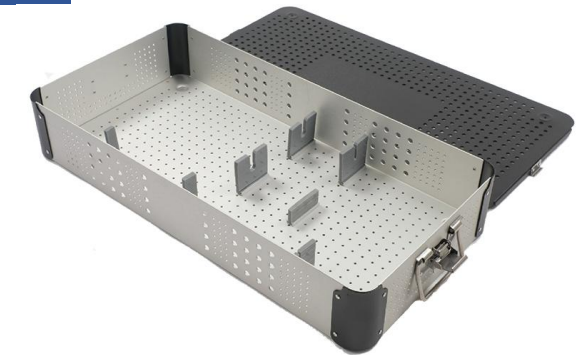
LHJ-372305
370*230*50 mm

LHJ-372307
370*230*70 mm

1-12 Flexible Cholechoscope Box



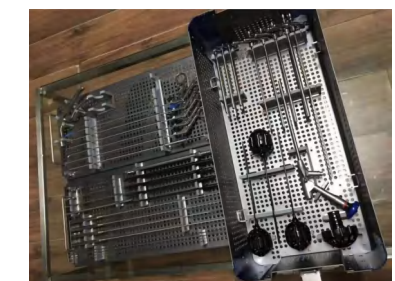
LHJ-603010
600*300*100 mm



1-13 Complete Set of Intervertebral Foramen Mirror Apparatus

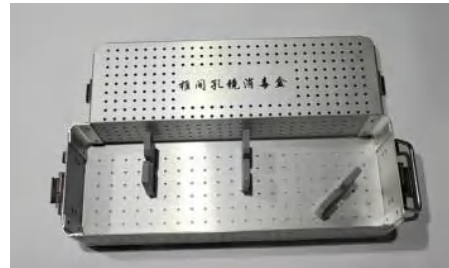


LHJ-542513-3 (3 layers)
540*250*135 mm



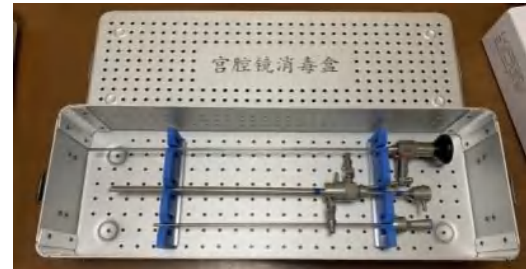
Aluminum Alloy Box

1-14 Intervertebral Foraminal Endoscope Box



LHJ-361307
360*130*70 mm

1-15 Hysteroscope Box



LHJ-401407
400*140*70 mm

1-16 Universal Instrument Box

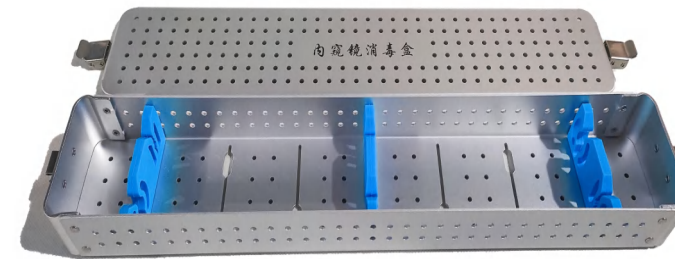


LHJ-602505
600*250*50 mm

LHJ-602510
600*250*100 mm

Aluminum Alloy Box

1-17 Ureteroscope Box



LHJ-601408
600*140*80 mm

LHJ-661408
660*140*80 mm

LHJ-701408
700*140*80 mm

LHJ-732010
730*200*100 mm

1-18 Arthroscopic Instrument Box



LHJ-432514-2 (2 layers)
430*250*140 mm

PPSU Plastic Box

2-1 PPSU Endoscope Box



PPSU-450704
450*75*45 mm

PPSU-270704
270*70*40 mm

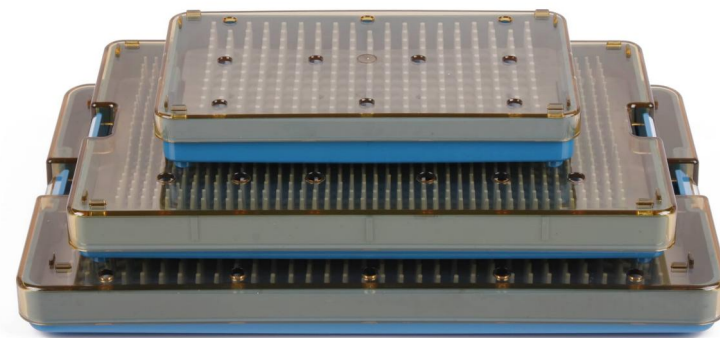
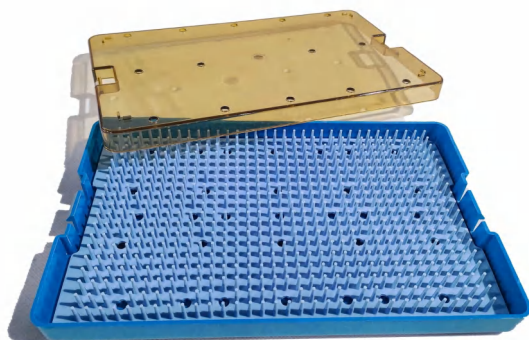
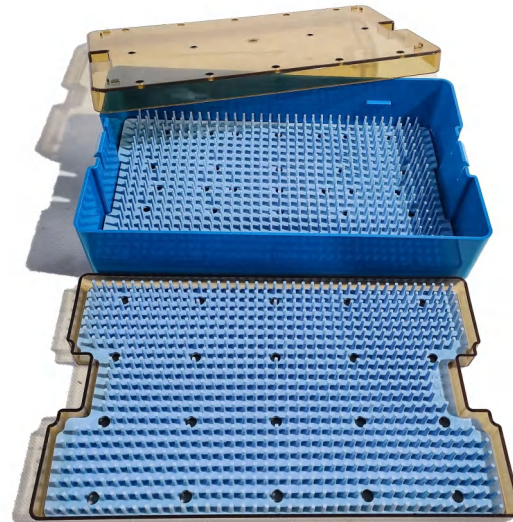
2-2 PPSU Microscope Box

PPSU-221402 with silicone pad
220*140*22 mm

PPSU-160902 with silicone pad
160*90*22 mm

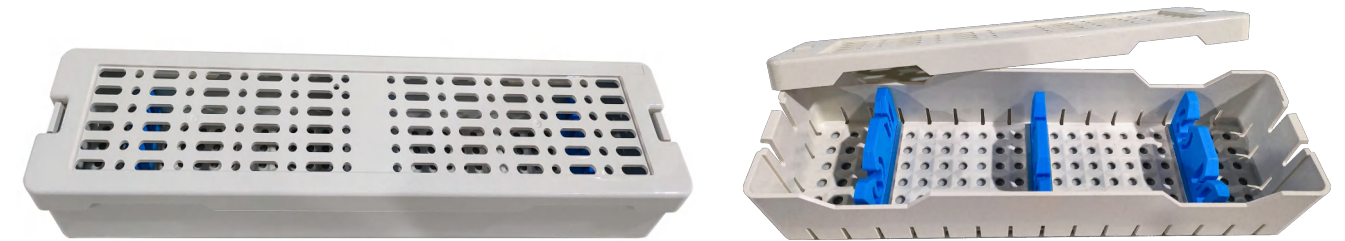
PPSU-261602 with silicone pad
260*160*22 mm

PPSU-261504-2 (2 layers)
with silicone pad
260*160*44 mm



Silicone Resin Box

3 Silicone Resin Endoscope Box (white)



GSZ-321006 (white)
320*100*60 mm

GSZ-461006 (white)
460*100*60 mm

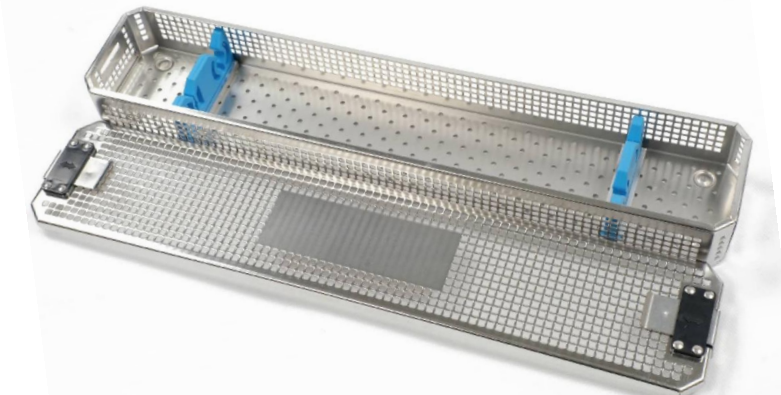
Stainless Steel Basket

4 Stainless Steel Basket (Customized)

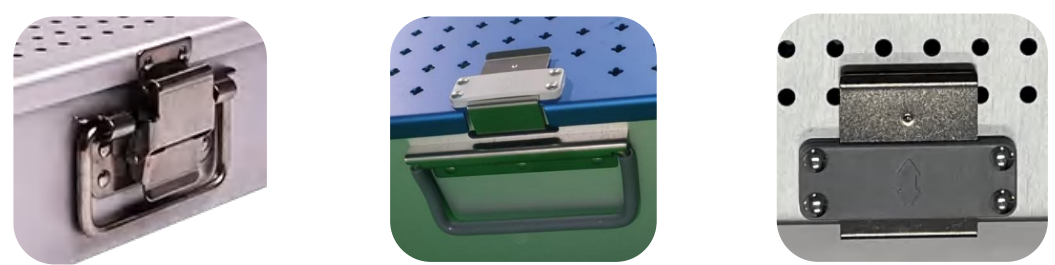


BXG-270905
270*90*55mm

BXG-450905
450*90*55mm



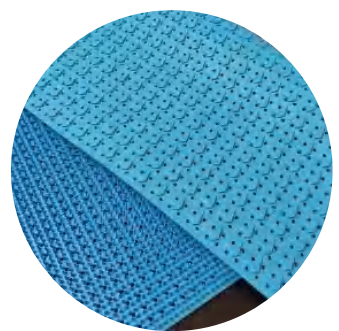
Lock



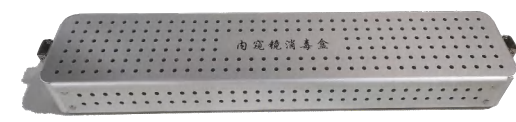
Laser logo



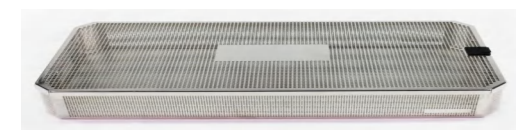
Silicone Pad



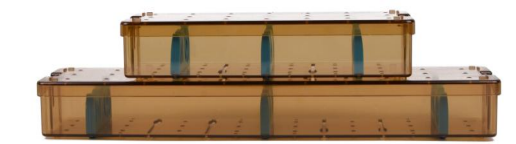
Materials:



Aluminum Alloy 5052



Stainless steel 304



PPSU



Silicone

Silicone Bracket



Color Option

Coating Colors



Silicone Bracket



Attention

Customization for colors require the provision of the exact Pantone number; otherwise, there may be color discrepancies.

Customization for logo by laser require the provision of the relevant source files. Currently, only .ai and .dwg formats are accepted.