

LASERHR

DM-808F

Diode Laser Hair Removal

— Operation Instruction



808nm
Diode Laser



Painless
Hair Removal



Cooling Comfortable
Treatment



Microchannel
Cooling System



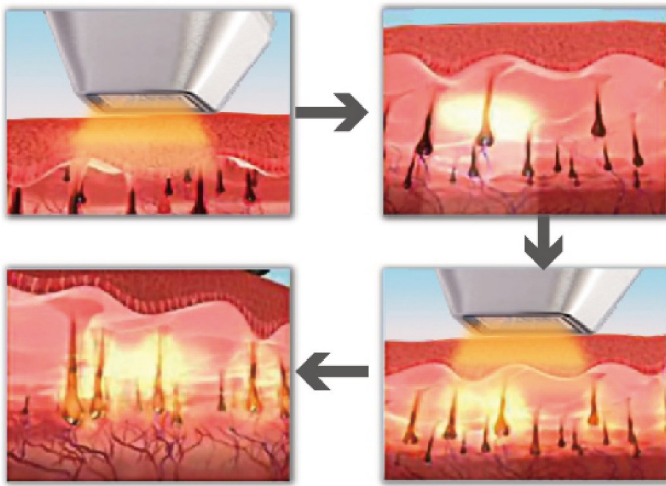
Contents

Principle	1
Function	2
Device Introduction	3
Install Main Points	4
Operation Interface	5
Operation Process	7
Parameters Proposal	11
Technical Parameter.....	12
Packing List	13



Principle

- Using selective light absorption, the Diode 808 laser is preferentially absorbed by the melanin of the hair. The light energy is taken up by the hair follicle and converted to heat energy, and minimal energy is transferred to the skin. This preferentially heats the hair and reduce the chance of hair regrowth. Special cooling technology is applied simultaneously during treatment to cool the skin and protect skin.



Function



Armpit Hair Removal



Chin&Lip Hair Removal



Beard Hair Removal



Bikini Hair Removal



Arm Hair Removal



Leg Hair Removal



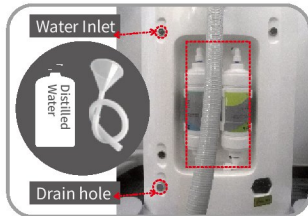
Device Introduction

● Main Host



Install Main Point

A. Input Water



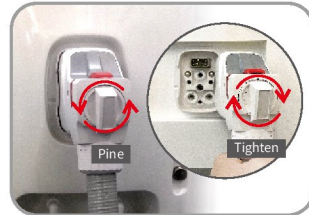
① Distilled water: pure water or distilled water; **Note** : add water every 10-15 days and change water every 4 weeks / change water filters 6 months approximate.

② Screw off the caps of water inlet and water overflow at the same time.

③ Take advantage of water pipe and water funnel to input water.

Note : please observe water flow hole, water spill automatically from the water outlet, means enough water input.

B. Handpiece Install

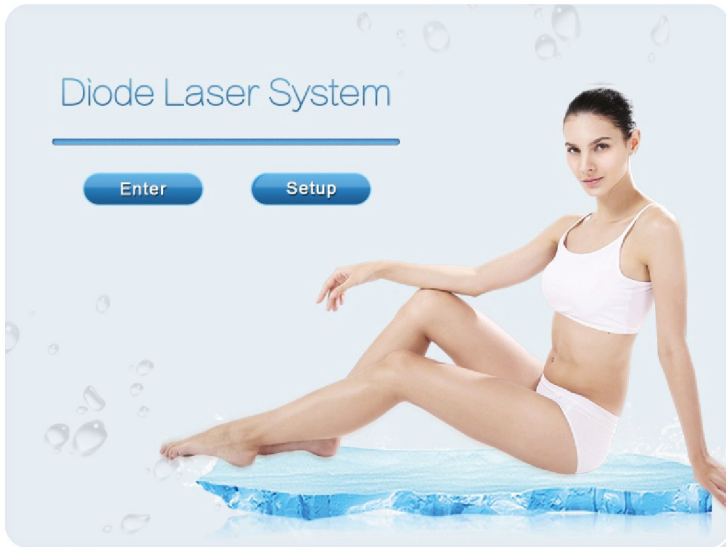


After aligning the hole and placing with, turn the button clockwise to tighten the handle.



Operation Interface

- Operating Interface:



Note: First Time Need Wait About 3-5 Minutes To Let Water Circulate Well, Then Press Enter To Go Next Interface.

Operation Interface

- Description of operating parameter setting :

The interface displays the following parameters and controls:

- Select Treatment Area:** A diagram of a human body with points A through E marked. A legend lists: A: armpit hair, male leg hair, bikini hair; B: Female facial hair, chin & lip hair; C: male chest hair, female leg hair; D: male chest hair, female leg hair; E: beard.
- Select Skin Type:** Indicated by buttons I through VI.
- Electrical Conductivity:** Water quality monitoring (Normal: 00.0-05.0 uS/cm), Water Velocity (3.7 L/min, Normal: 3.0L/min), Water Temperatures (29 C°, Normal: <30°C).
- Energy Density Setting:** 22 Strength J/cm². Range: From 1-88J/cm², Suggestion 8-20J/cm².
- Frequency Setting:** 01 Frequency HZ. Range: From 1-10Hz, Suggestion 2-4Hz.
- Electrical Conductivity:** 00.0 uS/cm.
- Water Temperature:** 29 C°.
- Ambient Temperature:** 24 C°.
- Controls:** +, - (to increase or decrease energy and frequency), RESET (factory data recovery), SAVE (save best energy and frequency as next time to reference), READY (start work after all parameters are set), STANDBY (pause treatment).
- Shots Count Used:** A red dashed box highlights the ambient temperature field.

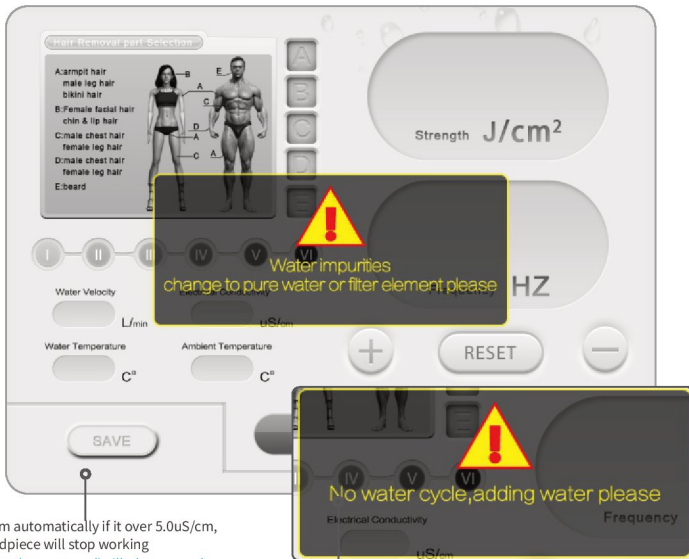
Ambient Temperature: Handpiece Temperature. At first, it turn down to less than 5°C, then it up to higher while it works for treatment.

After All Parameters Are Right Set, Click "Ready" To Start Work.

If Treatment Closed, Or Adjust Anything, Click "Standby" To Pause.

Operation Interface

- The solution for Different Alarm Automatically



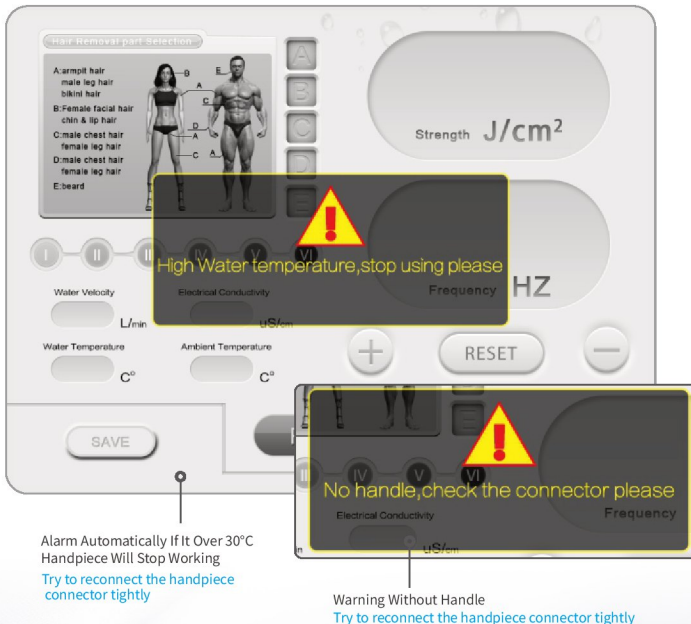
Alarm automatically if it over 5.0uS/cm,
Handpiece will stop working
Try to change new distilled water and
change new water filter

Alarm Automatically If It Below 1.2L/Min ,
Handpiece Will Stop Working

1. Try to reconnect the handpiece connector tightly
2. Try to check if the machine's water circulation is working normally

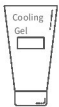
Operation Interface

- The solution for Different Alarm Automatically

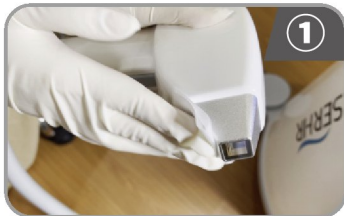


Operation Process

Prepare List : cooling gel , normal saline , applying bar , disposable gloves , tissue , wet wipes



Hair Removal Workflow :



Clean and disinfect the handpiece working area.



Shave and clean the treated area hair and keep 2mm .

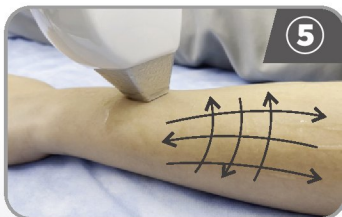
Operation Process



Then smear the cooling gel onto the treated skin.



According to the client's hair part status, adjust the intensity and the frequency.



Suggestion cross operation 3 times for every treated area, then keep the gel on skin about 10 mins after finished treatment, calm down the skin temperature.

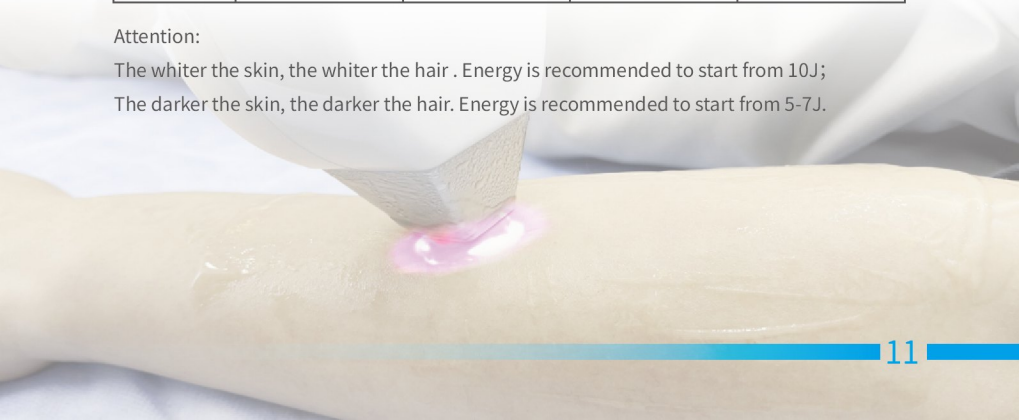
Parameters Proposal

Treatment Position	Energy	Frequency	Treatment Times	Interval
Armpit	8-15J	1-3Hz	1-3 Times	28-45 days
Lip hair	10-20J	1-3Hz	2-4 Times	28-45 days
Arm	10-22J	3-6Hz	1-3 Times	28-45 days
Legs	10-22J	3-6Hz	1-3 Times	28-45 days
Bikini	5-15J	1-3Hz	3-5 Times	28-45 days
Hairline	7-15J	1-3Hz	1-3 Times	28-45 days
Beard	5-15J	1-3Hz	3-6 Times	15-20 days

Attention:

The whiter the skin, the whiter the hair . Energy is recommended to start from 10J;

The darker the skin, the darker the hair. Energy is recommended to start from 5-7J.



Technical Parameter

Model	DM-808F
Laser Wavelength / Type	808nm Diode Laser
Power	1000W
Laser Energy Output	0-88J/cm ²
Pulse Output Frequency	1-10Hz
Spot Size	14*14mm
Control Screen Type	10.4" 24-Digital True Color Touch Screen
Laser Bars Power	400W
Cooling Mode	Water Cooling + Air Cooling + Double Semiconductor Cooling
Packing Size	69×69×133cm
G.W.	78kg
Packing	Packed With Poly Foam, Then Put Into a Aluminum/Wooden Box

Packing List



Machine



Laser Handle



Footswitch



Protective Eyepatch



Protective Glasses



Funnel



Pylons



Fuse*2



Power Cable